

OYSTA

Pearl+™



- One-touch SOS Button
- Status alerts
- Fall sensor
- Location updates
- GPS "Safety Zones"
- Reminder messages

Introducing Pearl+ from Oysta

The Oysta Pearl+ offers the latest in mobile telecare safety and features sophisticated tracking and communication capabilities to enhance the wearer's safety.

If lost, distressed or in need of help, the wearer can easily trigger an alarm. It allows telecare service providers to regularly check in with the wearer, be alerted of the wearer's location, and even communicate over a built-in speakerphone.

The Oysta Pearl+ is designed for vulnerable people who:

- desire greater freedom and independence
- want protection inside and outside their home
- need a simple way to call for assistance
- prefer to use a wearable rather than 'button and box'
- wish to give reassurance to loved ones and carers

What comes in the box?

The Oysta Pearl+ contains:

- Handset
- Mains plug
- 850 mH battery (Li-ion)
- Hands-free headset
- User manual

How does the Pearl+ technology work?

Unlike traditional telecare solutions that are limited to the VIP's proximity to their home, Oysta is a mobile solution. This means that whether the VIP is at the shops, on holiday, or just pottering around the garden, Oysta's Pearl+ will be on hand ready to provide support and assistance should it be required.

How long does it take to set up?

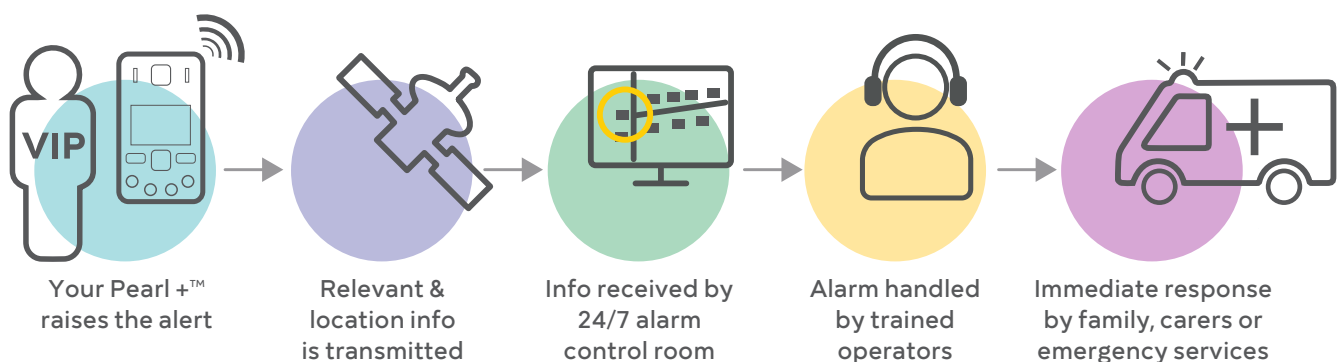
The Pearl+ is ready to use as soon as it is out of the box. The VIP simply turns the device on and confirms their details with the 24/7 care team.

Keeping VIPs safe

Oysta's telecare solutions proved a valuable tool in keeping vulnerable people safe, particularly reducing risk to people who may wander and subsequently go missing or get lost.

IntelliCare puts measures in place to limit risk and to summon assistance if necessary. Enabling families, carers and social care professionals to trace or track a VIP when there is a real concern they could go missing, IntelliCare provides everyone within the VIPs care network with the means to locate the missing person quickly and safely.

IntelliCare and Pearl+ are trademarks of Oysta Technology Ltd



Key features

One Touch SOS Button

In times of distress, pressing the SOS button will connect the Oysta Pearl+ to the chosen Control Room or contact, opening a two-way voice call.

Fall Sensor

The Pearl+ has a built in 3-axis accelerometer to sense falls. Upon activation, an alert will be sent out, opening an audio call.

Safety Zones

The Safety Zone feature enables safe geographical areas to be set. Monitoring movement in/out of zones at set times, an alert will be raised in the event of any activity outside of the boundaries.

Status Alerts

Indication on when the Pearl+ is switched on/off, charging or low battery levels, moving or not moving.

Location Updates

The Oysta service allows regular updates with no intervention by the VIP. If an alert is raised, location information is sent to the care network.

Reminder messages

Messages can be pre-set, flashing up on the Pearl+ display screen to remind the VIP to drink water/attend appointments.

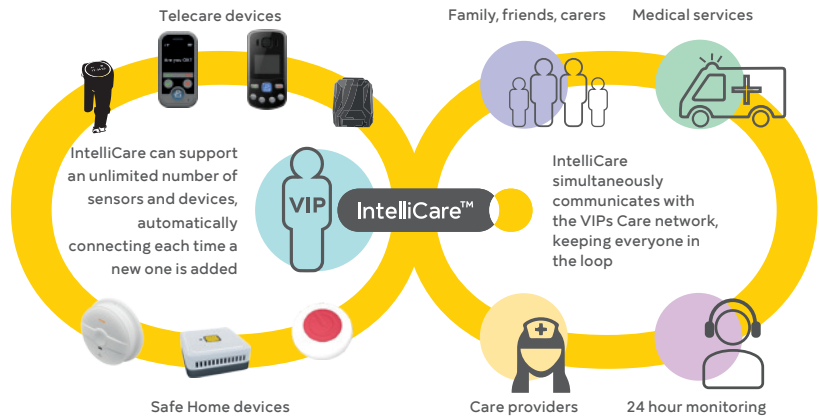
4 day battery life

Once the Pearl+ is charged, the device should remain with power for up to 4 days depending on settings and usage.

IntelliCare the power behind the Oysta Pearl+

Oysta's mobile telecare solutions are all supported by IntelliCare, Oysta's intelligent cloud-based platform.

Reliable and powerful, IntelliCare allows every home sensor and personal device to communicate independently. Managing alerts and communications for the VIP, IntelliCare collates the data generated by the telecare solutions, to provide the care network with a clear picture on the VIPs well-being.



| SPECS | |
|--------|------------------|
| Size | 92 x 44 x 17.9mm |
| Weight | 74g |

| FEATURES | |
|------------|-----|
| IP Rating | 44? |
| Speaker | Yes |
| Microphone | Yes |

| TECH | |
|----------------|--|
| Signal | 2G |
| GSM Freq. | Quad band: 850 / 900 / 1800 / 1900 MHz |
| GPS | u-blox All-in-One GNSS receiver |
| Battery | Li-Polymer, 1000 mAh |
| Operating temp | -20°C ~ +55°C |
| Display | 128 x 96, 1.3" |
| Sensors | Accelerometer |



OYSTA

Version: Jun2021

OYSTA TECHNOLOGY

Depslade Barn, Pury Hill Business Park, Towcester, NN12 7 LS, UK.

Tel +44 (0) 1295 530 101

Email info@oysta-technology.com

www.oysta-technology.com

